

Bariton Bb 1

Eder Keteer

comp. G Reinders
arr. Douwe Medema

(Fanfare)

$\text{♩} = 116$

4

10 1st.time TACET

3

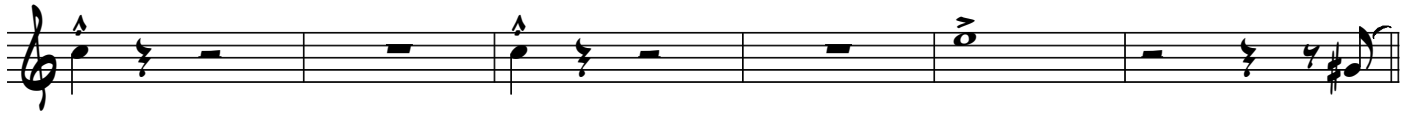
always play

2 1 2 2 2 30

58 4 3 3 5 64 10

82 2 88 D.S. al Coda

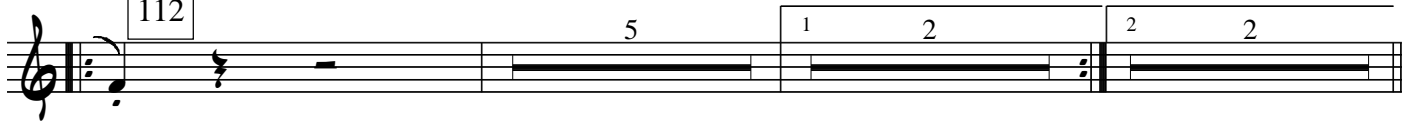
Eder Keteer Bariton Bb 1



96



112



122



132

